

Features:

- Broadband: DC - 18 GHz
- Extended Life: 5 million cycles
- Excellent Repeatability
- Low Insertion Loss
- 50Ω Internal Terminations
- Available in 3, 4, 5 or 6 Positions

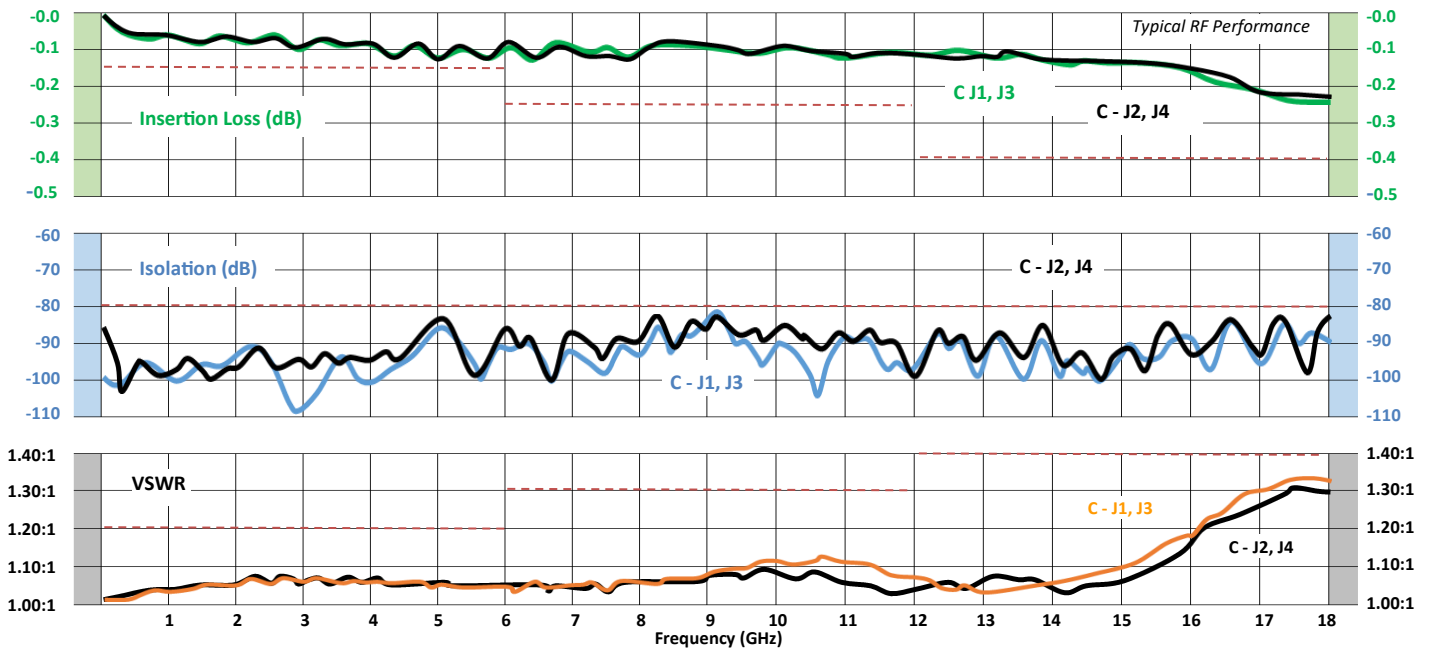


RF Specification:

Frequency, (GHz)	DC-6	6-12	12-18
Ins. Loss dB (max)	0.15	0.25	0.40
Isolation dB (min)	80	80	80
VSWR (max)	1.20:1	1.30:1	1.40:1
Switching Time	20 mS (max)		
Switching Action	Break-Before-Make		
Impedance	50 Ω (Switch and Terminations)		

Description:

High reliability and low loss performance makes these switches ideal for all testing applications. Magnetically latched in place after control voltage is removed. Available in 3, 4, 5 or 6 position versions with a wide selection of features available to meet most requirements. Good low to medium power handling. **Applications:** lab testing to production ATE requirements. **Markets:** defense, telecom, aerospace, enterprise, consumer and IoT.



Specifications	
Oper Temp	-25° C to +70° C
Oper Temp	-54° C to +85° C (ruggedized version)
Storage Temp	-55° C to +100° C
Humidity	Moisture resistant or immersion sealing available
Shock	MIL-STD-202 Method 213, Condition D, 500G (non oper)
Vibration	MIL-STD-202 Method 214, Condition D, 10G RMS (non oper)
Cycle Life	5M cycles (may vary based on selected options)

Voltages and Current				
Nominal Voltage, Vdc	12	15	24	28
Voltage Range, Vdc	11-13	14-16	22-26	26-30
Current (mA)*	250	200	150	140

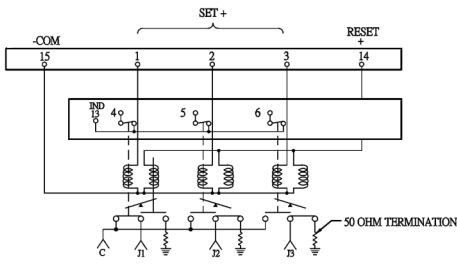
Note: Reset current = Current rating x (# of positions)

* at nominal voltage and +20°C

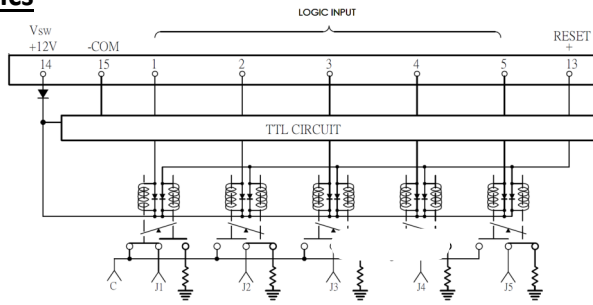
Popular Models	
13T-S2L3-1812	SP3T, Term, SMA, Latching, Ind, DC-18GHz, 12VDC
13T-S2L6-1812	SP3T, Term, SMA, Latching, +com, DC-18GHz, 12VDC
14T-S2L3-1812	SP4T, Term, SMA, Latching, Ind, DC-18GHz, 12VDC
14T-S2L3-1812	SP4T, Term, SMA, Latching, Ind, DC-18GHz, 12VDC
16T-S2L6-1824-T	SP6T, Term, SMA, Latching, +com, DC-18GHz, 24VDC, TTL
16T-S2L3-1824-T	SP6T, Term, SMA, Latching, Ind, DC-18GHz, 24VDC, TTL
16T-S2L3-1828-T	SP6T, Term, SMA, Latching, Ind, DC-18GHz, 28VDC, TTL

- See backside for a full list of available features and options
- Contact us for high power and custom designs

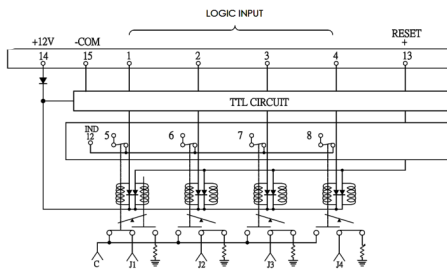
Schematics



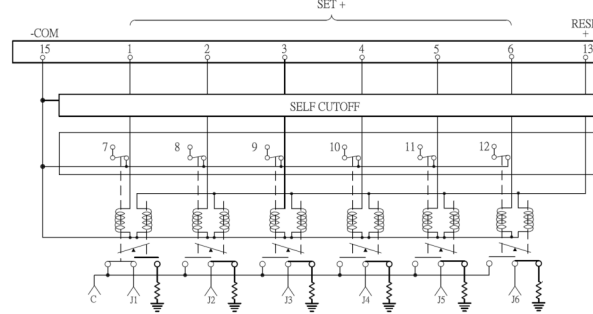
SP3T w/ Indicators in position J1



SP5T w/ TTL in position J1



SP4T w/ TTL & Indicators in position J1



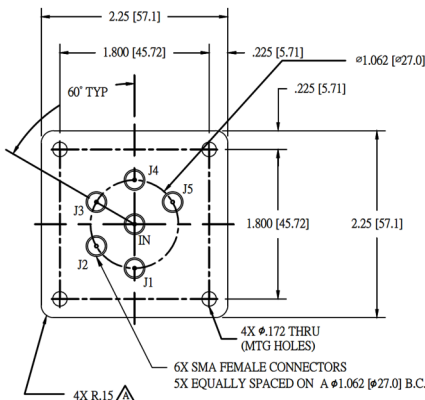
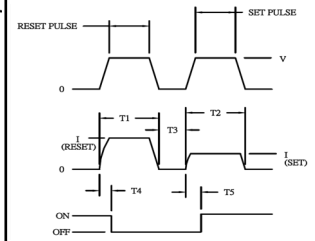
SP6T w/ Indicators & Self Cutoff in position J1

TTL Control

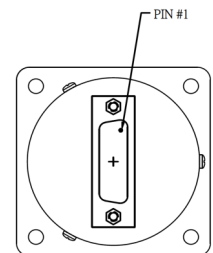
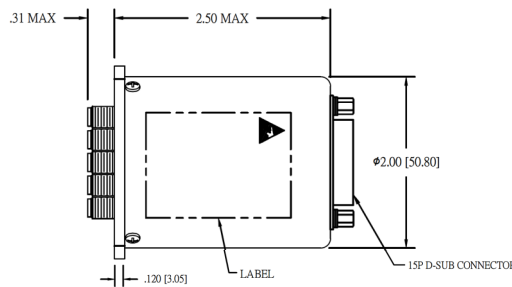
Logic "1": 2.4 to 5.0 VDC
Logic "0": 0 to 0.8 VDC

Actuation Control

Requires two sequential pulses
"Reset and Set" (see below)
T1 & T2 = 30mS min.
T3 = 10mS min.
T4 & T5 = 20mS max
Contact factory for full operating sequence, pin assignments and truth tables



Outline



Model Numbering System

Example: 16T-S2L3-1824-T

(SP6T, 50Ω Terminations, SMA, Latching, Indicators, DC-18GHz, 24VDC, TTL, D-Sub)

Model Type	Connector Type	Actuator Type	Frequency	Voltage	Options																				
Terminations T	SMA S2 2.92mm M2 Special X2	Latching L2 Latching, Ind L3 Latching, SC L4 Latching, Ind, SC L5 Latching, +com L6 Latching, +com, Ind L7 Latching, +com, SC L8 Latching, +com, Ind, SC L9	03 DC-3 GHz 06 DC-6 GHz 08 DC-8 GHz 12 DC-12 GHz 18 DC-18 GHz XX Special	05 5 VDC 12 12 VDC 15 15 VDC 18 18 VDC 20 20 VDC 24 24 VDC 28 28 VDC 48 48 VDC	<table border="0"> <tr> <td>R</td> <td>Ruggedized</td> </tr> <tr> <td>C</td> <td>Custom Design</td> </tr> </table> <table border="0"> <tr> <td>T</td> <td>TTL Driver</td> </tr> <tr> <td>D</td> <td>TTL Decoder</td> </tr> <tr> <td>J</td> <td>Trans Suppression Diodes</td> </tr> <tr> <td>A</td> <td>Auto Reset</td> </tr> <tr> <td>H</td> <td>16 Dip Socket Connector</td> </tr> <tr> <td>M</td> <td>Moisture Seal (2 levels available)</td> </tr> <tr> <td>P</td> <td>Solder Pin/Plug (SPMT)</td> </tr> <tr> <td>X</td> <td>Special</td> </tr> </table>	R	Ruggedized	C	Custom Design	T	TTL Driver	D	TTL Decoder	J	Trans Suppression Diodes	A	Auto Reset	H	16 Dip Socket Connector	M	Moisture Seal (2 levels available)	P	Solder Pin/Plug (SPMT)	X	Special
R	Ruggedized																								
C	Custom Design																								
T	TTL Driver																								
D	TTL Decoder																								
J	Trans Suppression Diodes																								
A	Auto Reset																								
H	16 Dip Socket Connector																								
M	Moisture Seal (2 levels available)																								
P	Solder Pin/Plug (SPMT)																								
X	Special																								

D-Sub connectors are std.

